



Say hello to
premium
experiences and
unforgettable
moments in
East Nepal.

SAY HELLO TO RED[®]



East Nepal's First International
Five-Star Hotel



OVERVIEW

A Defining Stay in East Nepal

As East Nepal's first internationally branded five-star hotel, and part of Wyndham Hotels & Resorts, the hotel brings a globally trusted legacy into a destination on the rise.

Strategically located at the junction of the Mahendra and Koshi Highways, with seamless access to Biratnagar Airport, it is designed for those who move with purpose, whether for business, celebration or leisure.

More than a place to stay, it is a contemporary retreat, where thoughtful design, intuitive service and a strong sense of place come together with quiet confidence.



ACCOMMODATION

Spaces That Settle You In

Every room at Ramada by Wyndham Itahari is designed to feel intuitive, where comfort is effortless, and every detail serves a purpose. Across 81 rooms and suites, the experience is defined by clarity, calm and considered design.

Deluxe Rooms

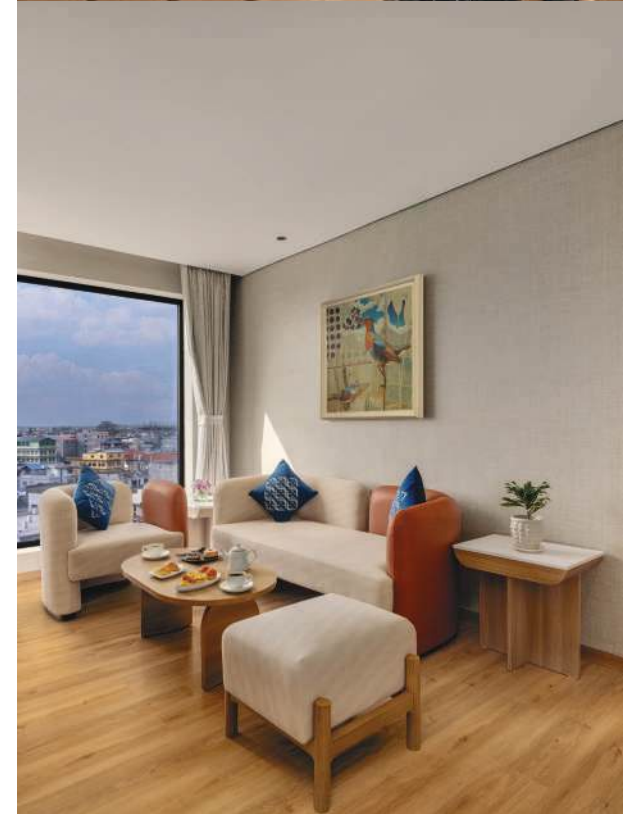
260 sq ft - 71 Rooms

Well-proportioned and thoughtfully designed, these rooms offer a seamless balance of comfort and functionality, ideal for both short stays and extended visits.

Premium Rooms

260 sq ft - 4 Rooms

Enhanced with refined interiors and private balcony access, these rooms offer an elevated sense of space crafted for guests who value added comfort and detail.







Junior Suites

400 sq ft – 3 Junior Suites

Generously laid out with a dedicated seating area, the Junior Suites create a natural transition between rest and productivity.

Accessible Junior Suite

400 sq ft – 1 Accessible Junior Suite

Designed with care and inclusivity, ensuring ease, comfort and independence without compromise.

Suites

520 sq ft – 2 Suites

With separate living and sleeping areas, the Suites are designed for extended stays and special occasions, offering privacy, space and a more residential experience.





DINING DESTINATIONS

Defined by Taste, Atmosphere and Time

Dining at Ramada by Wyndham Itahari unfolds across spaces that are distinct in character yet seamlessly connected, allowing each moment of the day to find its own setting.

Sukra Bar - Top Floor Bar

Elevated above the city, Sukra Bar offers a refined evening atmosphere with curated cocktails, fine wines, and premium spirits, designed for connection and conversation.

In-Room Dining - Available 24 Hours

A discreet and seamless dining experience, delivered whenever you choose.







NUA

NUA - All Day Dining

From vibrant mornings to relaxed evenings, NUA brings together global influences and local flavours in a setting that feels both refined and inviting.







aria

ARIA - Poolside Dining

Set beside the tranquil waters of the pool, ARIA offers an open-air dining experience that is relaxed, elegant and immersive perfect for slow afternoons and effortless evenings.



SUTRA

RAMADA
BY WYNDHAM
ITAHARI PASHUPATI MARG





SUTRA

Sutra Lobby Lounge

A contemporary café-style retreat designed for connection and comfort. With artisanal beverages, light bites and a relaxed atmosphere, it serves as a social hub for informal meetings and conversations.







MEETINGS & EVENTS

Where Every Detail Comes Together

From focused boardroom sessions to large-scale celebrations, the hotel's event spaces are designed with flexibility, precision and ease.

Event Spaces

AB Suite - 1,000 sq ft

- U-Shape: 30
- Classroom: 50
- Theatre: 90
- Round Table: 40

Regalia - 1,900 sq ft

- U-Shape: 45
- Classroom: 95
- Theatre: 160
- Round Table: 90

Imperia - 1,200 sq ft

- U-Shape: 35
- Classroom: 60
- Theatre: 110
- Round Table: 60

Integrated Facilities

- Audio-visual systems
- Video conferencing
- Projection and display solutions
- Flexible presentation tools
- Dedicated event support services
- Every element is designed to ensure that execution feels effortless and assured.







AMENITIES & WELLNESS

A Moment to Pause

Designed to complement the pace of travel, the hotel's wellness spaces offer a quiet balance between activity and relaxation.

Swimming Pool

An open, calming space for leisure and reset

Fitness Center

Fully equipped for a consistent routine

Sauna & Steam

Spaces designed for recovery and restoration

Business Center

Supporting focus and productivity

High-Speed Wi-Fi

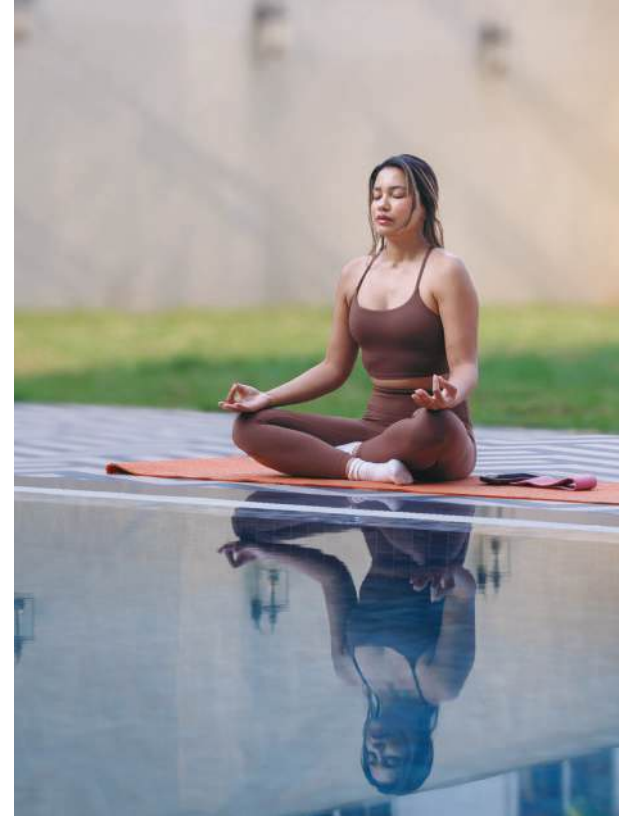
Seamless connectivity throughout

EV Charging & Parking

Thoughtfully integrated convenience

Concierge & 24/7 Room Service

Always present, never intrusive



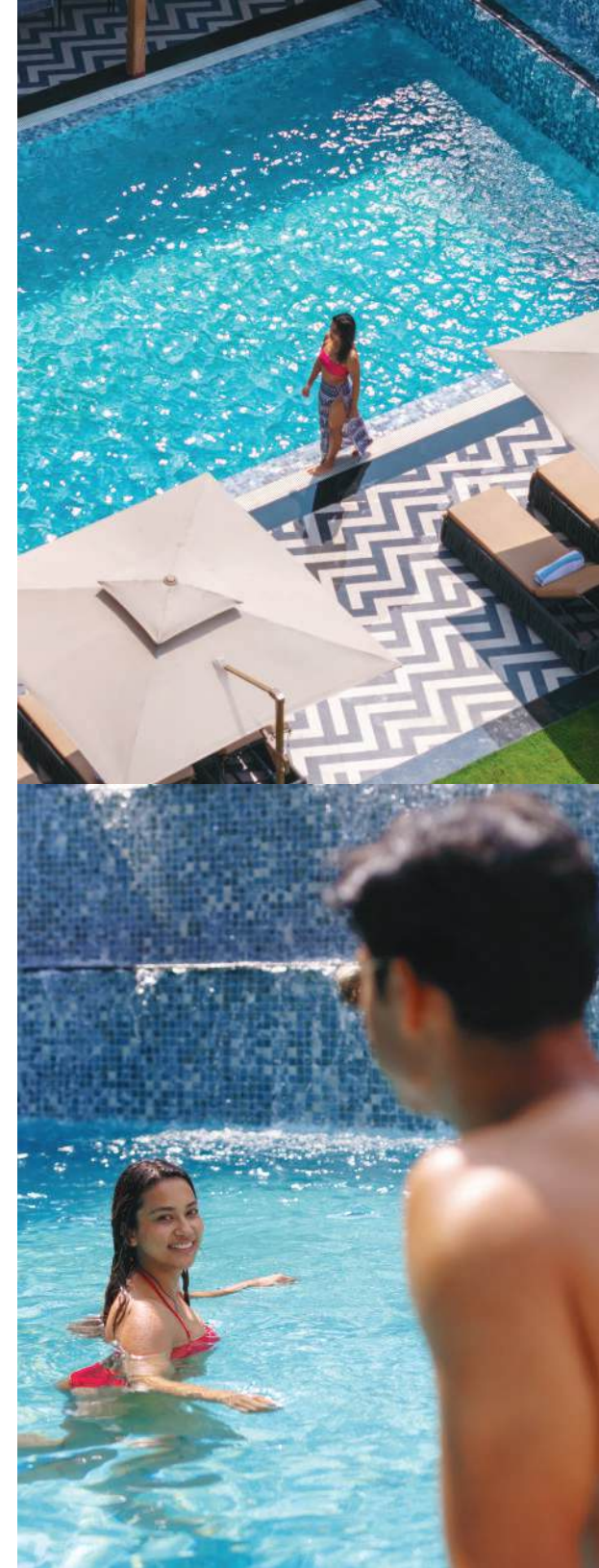


A vertical decorative wall with intricate, embossed patterns in a warm, golden-brown color. The patterns appear to be traditional or cultural motifs. A white, curved graphic element is overlaid on the right side of the wall.

FACILITIES & SERVICES

Every detail at Ramada by Wyndham Itahari is designed to deliver comfort, convenience and a seamless stay:

- 24-hour front desk and concierge services
- Airport transfers and travel assistance
- Car rental and ample parking facilities
- High-speed internet connectivity throughout the hotel
- Laundry, dry cleaning, and shoeshine services
- Luggage storage and guest assistance
- On-call medical support
- Butler Service





EXPERIENCE EAST NEPAL WITH US

A Gateway to Discovery

From this central location, Eastern Nepal unfolds with depth and diversity.

Visit the spiritual sites of Budha Subba Temple and Barahachhetra, experience Himalayan views from Bhedetar or explore the natural richness of Koshi Tappu Wildlife Reserve.

From the cultural rhythm of Dharan to the quiet landscapes of Ilam's tea gardens, the region offers a journey shaped by nature, heritage and everyday life. Ramada by Wyndham Itahari is not simply where you stay
it is where your experience of Eastern Nepal begins.

Say hello to
premium
experiences and
unforgettable
moments in
East Nepal.

SAY HELLO TO RED®



RAMADA[®]
BY WYNDHAM
ITAHARI PASHUPATI MARG

Contact & Reservations:

Location: Pashupati Marg, Itahari, Sunsari, Nepal.
Contact: +977 970-7093600 | info@ramadaitahari.com